

A university for Punggol

The Singapore Institute of Technology's new Punggol campus will be 'porous', which means some of its spaces will be available for businesses and the public to take part in events. At the same time, the public spaces within Punggol Coast MRT station will be used to host events for SIT students and the community.

1 Visitor centre

- Situated just across from Punggol Coast MRT station
- SIT's focal point for students, guests and the public
- Visitors can explore the SIT story through interactive touchpoints
- Also a place for students to showcase their projects

2 Makerspace

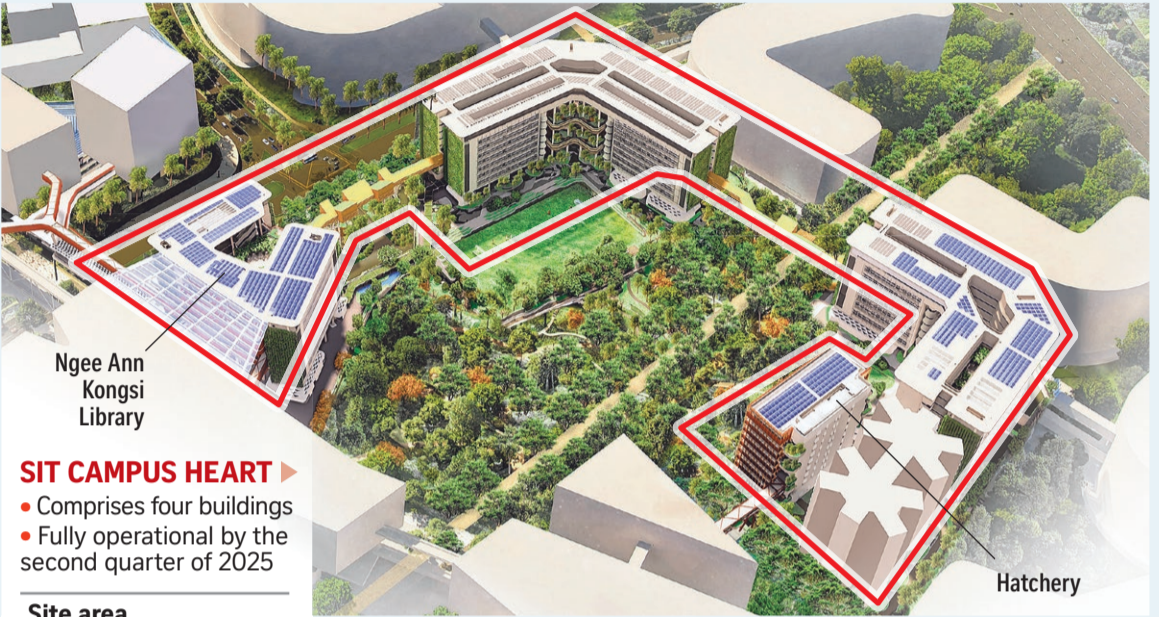
- Located above the visitor centre
- Intended to host Stem workshops and mentorship programmes for secondary school students
- Targeted to be ready by the end of 2025

3 Forum

- A vibrant communal space for the public to interact with the SIT community
- Intended to host student-led activities such as performances and exhibitions

4 Hatchery

- A separate 10-storey building
- This will drive incubation of ideas between academia and industry
- Industry partners can use the space to work alongside SIT students and staff on various projects



SIT CAMPUS HEART

- Comprises four buildings
- Fully operational by the second quarter of 2025

Site area

49,000 sq m

Gross floor area

122,000 sq m



Area enlarged

SIT CAMPUS COURT

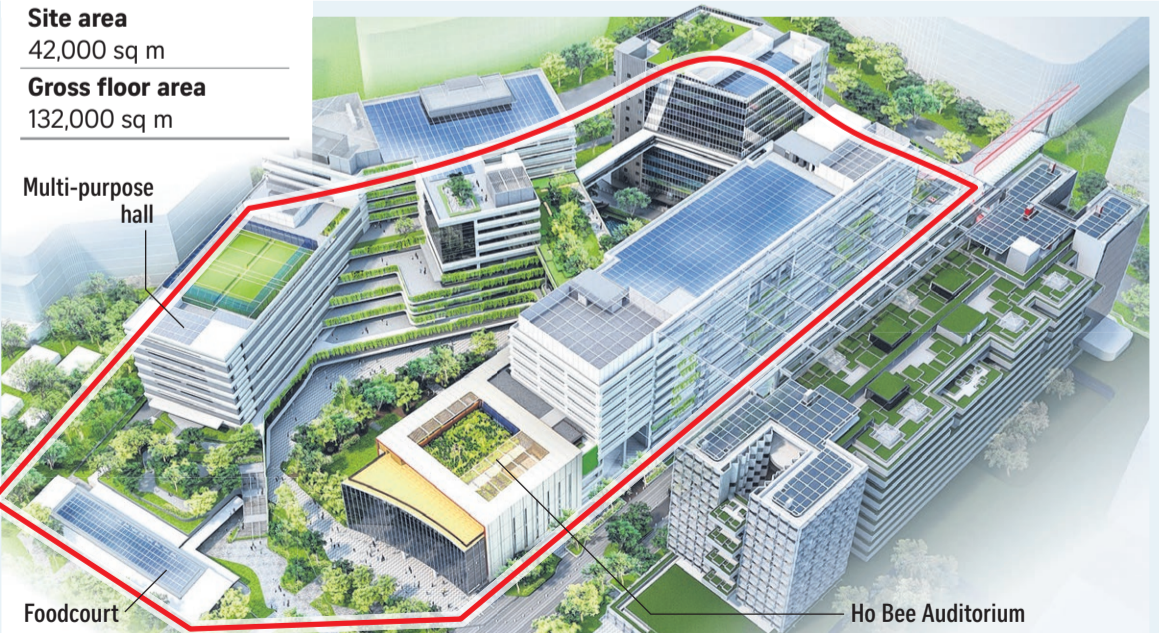
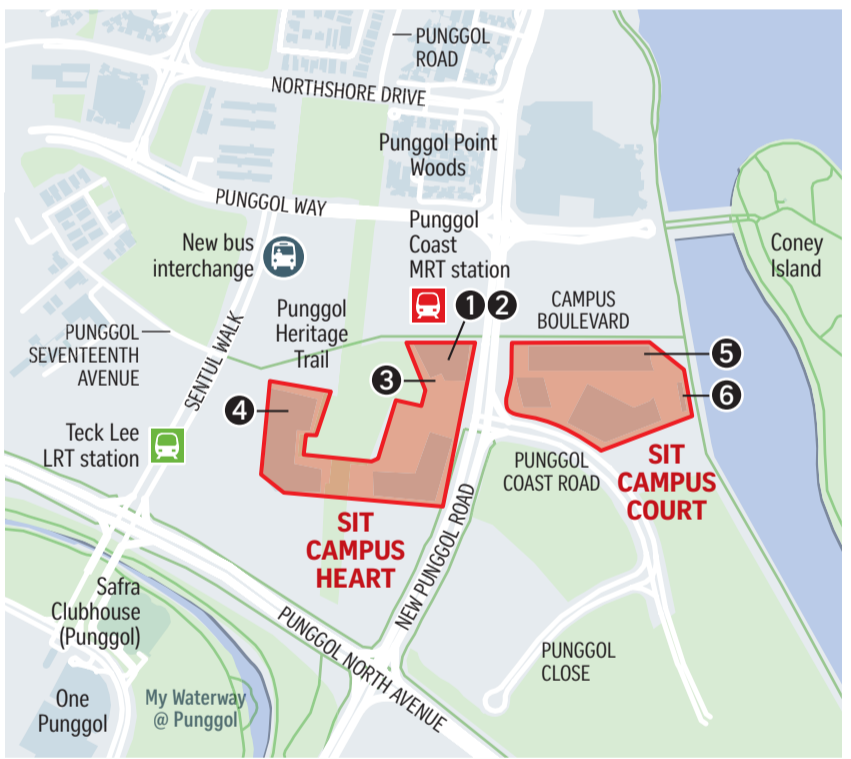
- Situated by the waterfront and overlooks Coney Island
- It will welcome 3,800 students from two academic clusters – business, communication and design; and infocomm technology – for the upcoming academic year starting in September

Site area

42,000 sq m

Gross floor area

132,000 sq m



5 Ho Bee Auditorium

- An 800-seat venue for student performances, industry talks, open houses, career fairs and convocation ceremonies
- The only venue of its size and capacity in the vicinity
- Available for public booking

6 Foodcourt

- A single-storey building
- Located by the Punggol Park Connector, overlooking Coney Island
- 14 stalls and 600 seats for students, staff and the public
- Targeted to open by August