



2022



HEALTH

AND SOCIAL

SCIENCES



# SIT AT

# A GLANCE

5

Programme  
Clusters

6

Campuses

6

Overseas  
University  
Partners

38

Undergraduate  
Degree Options

>135

Student Clubs,  
Committees, and Chapters

>200

Student Events and Activities

95%

of Students Secured a  
Job Within Six Months of  
Completing Their Final Exam<sup>^</sup>

\$3,675

Average Starting Salaries  
of Our Graduates<sup>^</sup>

<sup>^</sup>Source: 2020 Graduate Employment Survey

# SI Tizen-DNA

## Thinking Tinkerers

- Fundamentally Sound
- Practice-oriented

## Able to Learn, Unlearn and Relearn

- Embracing Change
- Learning Beyond University

## Catalysts for Transformation

- Improving Efficiency
- Creating Value Through Innovation
- Challenging Status Quo

## Grounded in the Community

- Serving the Community Through Knowledge and Skills

WHY PURSUE

# Health and Social Sciences?



## AN AGEING SOCIETY

By 2030, the number of people aged 65 and above is projected to increase from 430,000 today to more than 900,000, and make up 20% of the population<sup>1</sup>. An ageing society would mean a greater need for healthcare services and providers.

<sup>1</sup>Gan, KY. Ageing in Singapore in the Next 50 Years. Speech presented at: SG50 Scientific Conference on Ageing. (2015, Mar 19). Available from: <https://www.moh.gov.sg/news-highlights/details/speech-by-mr-gan-kim-yong-minister-for-health-at-the-sg50-scientific-conference-on-ageing-on-19-march-2015>



## MEANINGFUL AND REWARDING INDUSTRY

You can look forward to a fulfilling career, impacting the lives of individuals and communities in hospitals, polyclinics, specialist centres, intermediate and long-term care facilities, schools, or social care industries.



## PROGRAMMES TO MEET THE NEEDS OF SOCIETY

SIT offers entry-level honours degree programmes in Diagnostic Radiography, Dietetics and Nutrition, Physiotherapy, Radiation Therapy, Occupational Therapy, Speech and Language Therapy, as well as a post-registration honours degree in Nursing. Co-created with clinical partners and stakeholders, the curriculum fosters interprofessional learning and adopts a systems thinking approach where clinical practice education forms an integral part of the programme.

# Applied Research

Our students are given the opportunity to work on applied research projects with our faculty, healthcare, and government organisations, to benefit the wider community. Such projects can also involve students and faculty members from multiple disciplines and address either clinical, professional, or community problems that require holistic solutions.

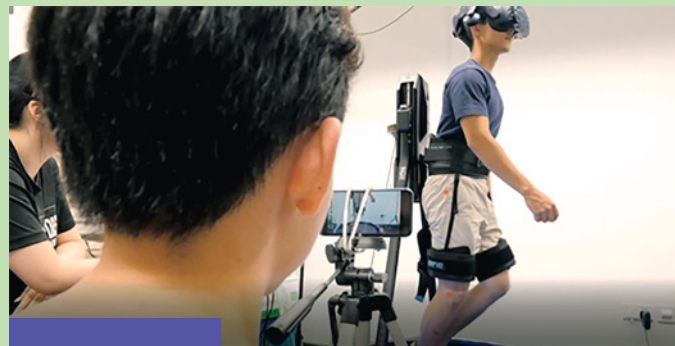


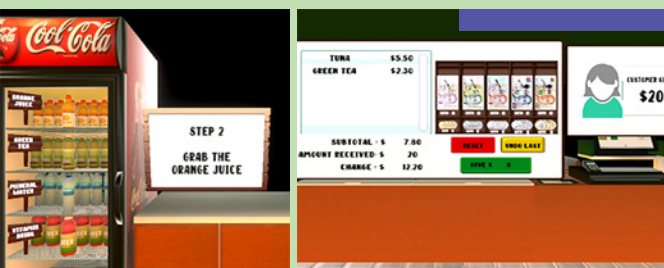
## Design Solutions for Special Needs Classrooms and Furniture in Singapore

An SIT team from the Health and Social Sciences, Engineering, and Business, Communication and Design clusters, worked with a social service agency to design appropriate seating that provides stability and manoeuvrability in the classroom for children with developmental disabilities. This will improve the engagement and learning of children with special needs in Singapore.

## Virtual Reality Mobility Training (VRMT)

A team of Physiotherapy students are collaborating with our Engineering and Infocomm Technology students and faculty members, as well as Ng Teng Fong General Hospital to design a Virtual Reality Mobility Training (VRMT) system. This will allow users such as patients with dementia, who cannot ambulate outside safely, to walk in an environment that is familiar to them while staying in a nursing home.





## Enhancing Vocational Ability of Patients Through Augmented Reality Games

Our Occupational Therapy and Infocomm Technology faculty members have teamed up with Bizlink Centre Singapore Ltd to develop a gamified vocational rehabilitation platform using augmented reality (AR) for persons with cognitive problems. This will enable them to improve their vocational skills and undergo training in a fun and safe environment.

## Teaming Up to Study the Effectiveness of Running Sandals

A team of final-year Physiotherapy students were part of a multidisciplinary collaboration with some engineering students and faculty members to study lower limb muscle activities using running sandals. The data collected could help allied health practitioners, especially physiotherapists, understand the risks and potential muscle strain runners could face when running using this minimalist footwear.



## Encouraging Seniors' Use of Digital Tools

In collaboration with Tsao Foundation's Community for Successful Ageing, our Nursing students and faculty members have produced video clips to guide seniors in using Zoom. This will encourage them to keep in touch with family and friends and participate in social activities.



# MEET KEVIN

**Chen Zhenqiang Kevin**  
**Year 2**  
**Diagnostic Radiography**



## About myself

I am an aspiring radiographer who enjoys playing the saxophone. My wife, daughter, and family members are my world. I would like to thank them for their support when I decided to embark on this career switch.

## Before studying at SIT

I was an education officer with the Ministry of Education at the primary level for a decade. Having an interest in the medical field since young, I seized the opportunity to pursue Diagnostic Radiography through the Career Conversion Programme (CCP).

## One song to describe my SIT experience

'Try Everything' by Shakira.

## Being an adult learner

Beginning at entry-level as a Year 1 undergraduate takes humility. Starting from scratch where your past experiences might not count for much is challenging. But I treat it as a second chance to do better and view this as a gateway to more employment opportunities.



## Tip on having a school-life balance

Plan your time well and don't be too hard on yourself.

## Support from SIT for Adult Learners

Faculty members double up as our academic advisors, and are part of our learning journey throughout.

## One tip for prospective adult learners

Seize every opportunity to be able to learn, unlearn, and relearn.

Click [here](#) to watch my video.



# Diagnostic Radiography

## Campus Location

SIT@Dover

## Career Opportunities

You can be employed as a diagnostic radiographer in a variety of settings, such as:

- Public and Private Hospitals
- Private Clinics
- Medical Centres

The Diagnostic Radiography programme is a four-year, direct honours degree programme that prepares you for the role of a professional radiographer. It is the only diagnostic radiography programme offered by an autonomous university in Singapore.

The curriculum is developed in close consultation with the radiography industry to ensure relevance and graduates' employability. The programme is accredited by the Allied Health Professions Council (AHPC), thus enabling graduates to practise as professional radiographers in Singapore.

## Curriculum Highlights

- Anatomy and Physiology
- Patient Care and Safety
- General Radiographic Practice
- CT and MRI
- Radiobiology and Radiation Protection
- Image Interpretation
- 32-week Clinical Practice Education



At Changi General Hospital (CGH), we're committed to grooming the next generation of health professionals, which is why we have decided to take in SIT students through its clinical placement programme. Having students at CGH gives our staff a chance to support their development and personally mentor these up-and-coming health professionals. It has been rewarding to see the students develop, both professionally and personally, in their clinical placements.

**The maturity, enthusiasm, and professionalism of SIT students is indeed, promising for our healthcare sector ahead.**

**MR GABRIEL LEONG**  
Head, Radiography  
Changi General Hospital

# Dietetics and Nutrition



Click [here](#) to find out more

## Campus Location

SIT@Dover

## Career Opportunities

You can be employed as a dietitian in a variety of settings, such as:

- Public and Private Hospitals
- Community Hospitals
- Intermediate and Long-Term Care Organisations, including Nursing Homes and Rehabilitation Centres
- Private Practice
- Polyclinics

The Dietetics and Nutrition programme is a four-year, direct honours degree programme that addresses the growing demand for dietetic manpower in hospitals and intermediate long-term care (ILTC) settings in Singapore.

As the first dietetics degree programme to be offered by an autonomous university in Singapore, this programme will provide you with evidence-based theoretical knowledge, research skills, and practical experience across all domains of dietetic practice (individual clinical case management, community and public health nutrition, and food service management).

The programme is designed to meet the academic requirements and clinical competencies for graduate entry-level professional dietitians, based on international educational standards for professional dietetic practice. The curriculum is developed in close consultation with chief dietitians from major healthcare clusters in Singapore, to provide you with up-to-date and relevant knowledge, as well as specialised skills in all domains of dietetic practice.

In my work at the Dietetic & Food Services department in Changi General Hospital (CGH), we are responsible for providing dietary consultations to patients to support them on their journey to good health. Students can gain hands-on experience within the hospital setting to better understand and address the social determinants of health that impact our patients' health outcomes. Through my observations, I see that

**SIT students are dedicated, passionate, and eager to learn, and we hope that they will contribute to our local healthcare sector.**

**MRS MAGDALIN CHEONG**  
Head and Deputy Director  
Dietetic and Food Services  
Changi General Hospital

## Curriculum Highlights

- Nutrition Throughout the Lifespan
- Nutritional Assessment
- Nutrition, Health, and Disease
- Community and Public Health Nutrition
- Medical Nutrition Therapy
- Communication Skills and Nutritional Counselling
- Honours Thesis
- 32-week Clinical Practice Education

# Nursing

## Campus Location

SIT@Dover

## Career Opportunities

You can pursue further career advancements in clinical practice, education, and management, in positions such as:

- Nurse Clinician
- Nurse Educator
- Nurse Manager
- Nurse Researcher

The SIT and University of Glasgow joint degree in Nursing is a two-year post-registration honours programme, jointly developed by both universities and accredited by the Singapore Nursing Board. Co-created and designed in partnership with stakeholders from healthcare institutions, nursing education partners, and the Ministry of Health (MOH), you will build on the foundation you have established through your nursing diploma at Nanyang Polytechnic or Ngee Ann Polytechnic.

In line with MOH's Healthcare Industry Transformation Map, you will be equipped with critical, analytical and innovative skills, as well as leadership, research, teaching, and clinical competencies – much needed qualities for the new roles that you will be performing to meet the healthcare challenges Singapore faces.

## Curriculum Highlights

- Health Assessment and Clinical Reasoning
- Design Innovation
- Principles and Practice of Population Health
- Managing Long Term Conditions in Communities
- Evidence-Based Practice
- Electives (Palliative Care and Global Health)



The SIT-UofG Nursing degree programme is designed to build on existing foundation knowledge learnt at a diploma level and refine students' critical and leadership skills. SIT-UofG nursing students that I have interacted with have been highly engaged and motivated, and

**I am confident that they will raise the standard of nursing in Singapore with their skill sets and positive attitude.**

**MS PAULIN KOH**  
Chief Nursing Officer  
Ministry of Health

- Honours Thesis
- Six-week Clinical Placements
- Overseas Immersion Programme (OIP)

# Occupational Therapy



Click [here](#)  
to find out  
more

## Campus Location

SIT@Dover

## Career Opportunities

You can be employed as an occupational therapist in a variety of settings, such as:

- Public, Private, and Community Hospitals
- Intermediate and Long-Term Care Organisations, including Nursing Homes, and Rehabilitation Centres
- Private Practice Clinics and Consultancy
- Government Agencies
- Special Schools, Early Intervention, and Child Development Centres

The Occupational Therapy programme is a four-year, direct honours degree programme that is designed to provide an excellent educational experience in the theory and practice of occupational therapy. Upon successful completion of academic modules and clinical practice education, you will have the knowledge, skills, and understanding to support contemporary development and delivery of occupational therapy, to meet the evolving needs of Singapore's population.

The programme is accredited by the Allied Health Professions Council (AHPC) and World Federation of Occupational Therapists (WFOT). This will enable graduates to practise as professional occupational therapists in Singapore and internationally, subject to local laws.

It has been a pleasure for us to work closely with SIT faculty and students. Through their clinical placements at our organisation, we find the students to be well-informed and prepared for a career in the healthcare and social care sectors.

**The dedication and commitment we see in the faculty members are also highly commendable as they come with a unique blend of academic credentials**

and work experiences, coupled with an intrinsic motivation to see their students succeed. The relationship we have with the university is invaluable and critical to our effort to hire the best, who can assimilate in their future workplace.

**MR ABHIMANYAU PAL**  
Chief Executive Officer  
SPD

## Curriculum Highlights

- Occupational Therapy Clinical Reasoning
- Occupational Therapy Practice Skills
- Occupational Therapy and Chronic Disease Management with Older Adults
- Play, School and Transition
- Application of Psychopathology in Occupational Therapy
- Occupational Therapy Entrustable Professional Activities
- 30-week Clinical Practice Education

# Physiotherapy

## Campus Location

SIT@Dover

## Career Opportunities

You can be employed as a physiotherapist in a variety of settings, such as:

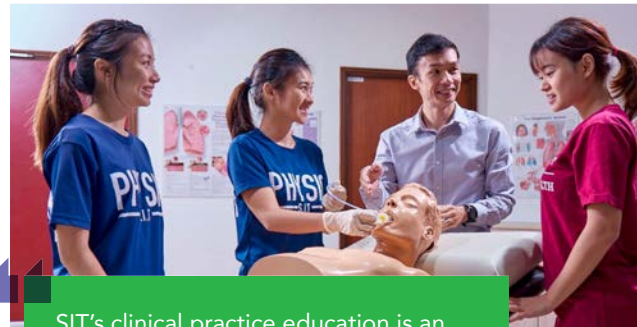
- Public and Private Hospitals
- Intermediate and Long-Term Care Organisations, including Community Hospitals, Nursing Homes, and Rehabilitation Centres
- Polyclinics
- Private Practice
- Government Agencies
- Sports and Military Settings
- Special Schools

The Physiotherapy programme is a four-year, direct honours degree programme. The programme aims to train you to become a professional physiotherapist who is theoretically-grounded and clinically-oriented to practise autonomously in different specialities of physiotherapy.

You will have the opportunity to gain clinical experience through clinical attachments with various major hospitals and healthcare facilities in Singapore. Mid-career individuals with prior degree qualification in a science-related field may apply for the Physiotherapy programme under the Career Conversion Programme (CCP). The programme is accredited by the Allied Health Professions Council (AHPC), thus enabling graduates to obtain direct registration to practise as physiotherapists in Singapore.

## Curriculum Highlights

- Neurological Physiotherapy
- Musculoskeletal Physiotherapy
- Cardiopulmonary Physiotherapy
- Chronic Disease Rehabilitation
- Exercise Physiology and Clinical Exercise Prescription
- Physiotherapy Across Lifespan
- Health Promotion and Population Health
- 30-week Clinical Practice Education



SIT's clinical practice education is an important and valuable opportunity for both students and the healthcare industry. It allows the students to put what they have learnt into real practice. At the same time, it also gives healthcare institutions a chance to share real-life experiences with the students. Our journey with the SIT Physiotherapy students has been very encouraging and positive.

**The students demonstrated a high level of professionalism, a positive learning attitude, and a strong passion in acquiring new skills.**

This has led to many of them joining Tan Tock Seng Hospital as their first career, and we are happy to be part of their professional journey even before they graduate.

**MR CHRISTOPHER NG THONG LIAN**  
Head of Department  
Senior Principal Physiotherapist  
Tan Tock Seng Hospital

# Radiation Therapy

## Campus Location

SIT@Dover

## Career Opportunities

You can be employed as a radiation therapist in the public or private sector to serve in a radiation therapy centre.

The Radiation Therapy programme is a four-year, direct honours degree programme that prepares you for the role of a professional radiation therapist. As the only radiation therapy degree programme offered in Singapore, the curriculum is developed in close consultation with the radiation therapy industry to ensure relevance and graduates' employability.

The programme is accredited by the Allied Health Professions Council (AHPC), thus enabling graduates to obtain direct registration to practise as radiation therapists in Singapore.

## Curriculum Highlights

- Patient Care and Safety
- Cancer Pathology
- Radiation Oncology
- Principles of Radiation Therapy
- Advances in Radiation Therapy
- 32-week Clinical Practice Education



**The SIT Radiation Therapy programme is closely aligned to industry practices.**

Graduates are prepared for their clinical practice from year one and ready to enter the exciting and rewarding Radiation Therapy profession upon graduation. Beyond producing good, competent radiation therapists, the programme has also nurtured empathetic and strong communicators with a heart for the patients they serve. The curriculum is future-oriented, interdisciplinary, and interprofessional, preparing them to become visionary leaders and compassionate radiation therapists of tomorrow.

**DR MICHAEL WANG**  
Chairman  
Division of Radiation Oncology  
Senior Consultant  
National Cancer Centre Singapore

Students admitted to the Radiation Therapy programme may be required to have secured a sponsorship from their employer at the point of enrolment. Refer to [SingaporeTech.edu.sg](http://SingaporeTech.edu.sg) for updates.

# Speech and Language Therapy



Click [here](#)  
to find out  
more

## Campus Location

SIT@Dover

## Career Opportunities

You can be employed as a speech and language therapist in a variety of settings, such as:

- Child Development Centres
- Special Schools
- Social Service Agencies
- Acute Hospitals
- Community Hospitals
- Intermediate and Long-Term Care Organisations, including Nursing Homes and Rehabilitation Centres
- Private Practice

The first Speech and Language Therapy undergraduate degree programme in Singapore has been carefully developed with input from senior speech and language therapy practitioners across the local public healthcare, community care, social services, and private sectors.

The four-year, direct honours degree programme serves to meet the national needs by training a new generation of highly-competent and market-ready speech and language therapists, who will help individuals with communication, feeding, and swallowing difficulties across lifespans. The programme will seek accreditation from the Allied Health Professions Council (AHPC), thus enabling graduates to practise as professional speech and language therapists in Singapore.

As the only local, autonomous university that offers a bachelor's degree in Speech and Language Therapy, this programme will provide students with a robust and relevant curriculum that caters to the rapidly changing landscape of Singapore's healthcare sector. The faculty, who are also clinical practitioners themselves, are well renowned in their respective fields of speech-language therapy, and students will be able to learn from their expertise.

**Students will be able to contextualise their learning through the clinical placements, which no class or textbook can replicate.**

As part of their clinical placements, students will be exposed to interprofessional work and direct patient care experiences, which are invaluable.

**MS MELISSA CHUA**  
Head and Senior Principal Speech Therapist  
Sengkang General Hospital

## Curriculum Highlights

- Communication Development
- Communication Disorders in Children
- Dysphagia Management in Adults
- Fluency and Related Disorders
- Voice Sciences and Disorders
- Paediatric Feeding and Swallowing Disorders
- 30-week Clinical Practice Education

# MEET NAFISAH

**Nafisah Binte Zulkifli**

**Year 2**

**Speech and Language Therapy**

## About myself

I truly love writing. I'm currently working on my second compilation of poetry and prose! I keep these compilations for myself, but I do share my work with others occasionally.

## One common myth about SIT

That it is for those who didn't do well in their GCE 'A' Levels or Polytechnic diploma.

## Pursuing Speech and Language Therapy

I hope to help others enjoy and experience life more by helping them with their reading, writing, and speaking skills.

## One thing I wished I knew when choosing Speech and Language Therapy

That I would need to learn about children and adults simultaneously and learn to switch code when speaking to different groups of people.



## One tip for prospective students

Socialise and make friends, especially with your coursemates. It will make your university experience more fun.

## Advice to my younger self

Don't take your losses too hard. In a couple years, you might realise they were "wins" all along!

Click [here](#) to watch my video.



# START YOUR

# NEXT STEP HERE

**W**e adopt an aptitude-based approach in assessing applicants for admission. This means we look beyond your grades and see you as an individual with diverse qualities, talents, and life experiences. We are interested in who you are, and how you can contribute to the community and industry.

We look out for...



**Academic Proficiency and Prior Learning**

**Relevant Work Experience**



**Related Exposure and Achievements**

**Passion and Aptitude**



**Performance During Interviews**

Submit and check your application status via [Admission.SingaporeTech.edu.sg](https://Admission.SingaporeTech.edu.sg).

For application dates and deadlines, visit [SingaporeTech.edu.sg](https://SingaporeTech.edu.sg).

# ADMISSIONS

## TIMELINE

**MID-JAN – MID-MAR**

- ▶ Application Opens
- ▶ SIT Scholarship Application Opens

- ▶ Shortlisted applicants will be assessed for Admissions and a Scholarship concurrently. For specific degree programmes, you may have to submit portfolios or essays, and/or be assessed through written or technical tests.

**FEB – MAY**

**APR – MAY**

- ▶ Check your Admissions Application Outcome. Students awarded Scholarships will receive their offers concurrently.

- ▶ If you are successful, accept our offer!

**BY JOINT ACCEPTANCE DEADLINE**

**JUNE**

**FINANCIAL ASSISTANCE APPLICATION OPENS**

- ▶ When you have accepted our offer, you will receive a pre-matriculation package.

- ▶ Admissions
- ▶ SIT Scholarship

# Admission Requirements

## GCE 'A' Level/IB Diploma/NUS High School Diploma

DEGREE PROGRAMME	GCE 'A' LEVEL	IB DIPLOMA	NUS HIGH SCHOOL DIPLOMA
<b>Diagnostic Radiography</b> <b>Radiation Therapy*</b>		Good pass in two H2/HL subjects (Biology, Chemistry, Physics, and Mathematics)	
<b>Dietetics and Nutrition</b>	Good pass in two H2/HL subjects (Biology, Chemistry, Physics, Sports, Exercise and Health Science, and Mathematics), one of which must be Chemistry		
<b>Occupational Therapy</b>		Good pass in two H2/HL subjects, one of which must be Biology, Chemistry, Physics, Sports, Exercise and Health Science, or Mathematics	
<b>Physiotherapy</b>		Good pass in two H2/HL subjects (Biology, Chemistry, Physics, Sports, Exercise and Health Science, and Mathematics)	
<b>Speech and Language Therapy</b>		Good pass in two H2/HL subjects, with a good pass in H1/SL or H2/HL Biology, Chemistry, Physics, Mathematics, or Economics	

- GCE 'A' Level applicants should have obtained passes in at least two H2 Level subjects and offered General Paper (GP) or Knowledge & Inquiry (KI) in the same sitting.
- International Baccalaureate (IB) applicants should have obtained a minimum grade five for at least two HL and one SL subjects, and the IB Diploma.
- NUS High applicants should have obtained the NUS High School Diploma.

Applicants with the above qualifications are also required to fulfil the Mother Tongue Language (MTL) requirements stipulated by the Ministry of Education.

Applicants will also need to fulfil language requirements. Please refer to subsequent pages.

\*Students admitted to the Radiation Therapy programme may be required to have secured a sponsorship from their employer at the point of enrolment.

For up-to-date information, please refer to [SingaporeTech.edu.sg](https://www.singaporetech.edu.sg).

# Admission Requirements

## Diploma from any local Polytechnic

### DEGREE PROGRAMME

### DIPLOMA FROM ANY LOCAL POLYTECHNIC

---

#### Diagnostic Radiography

---

#### Dietetics and Nutrition

---

#### Occupational Therapy

---

#### Physiotherapy

---

Completed a relevant Diploma\*

#### Radiation Therapy<sup>#</sup>

---

#### Speech and Language Therapy

---

#### Nursing

- Be qualified as a Registered Nurse
  - Hold current registration with the Singapore Nursing Board (SNB)
  - Completed an SNB-accredited Diploma in Nursing programme in Singapore. Only these two diplomas are accredited:
    - Nanyang Polytechnic: Diploma in Nursing
    - Ngee Ann Polytechnic: Diploma in Health Sciences (Nursing)/Diploma in Nursing
- 

Applicants with other qualifications should complete at least 12 years of formal education deemed as acceptable, equivalent qualifications to be considered for admission.

Applicants will also need to fulfil language requirements. Please refer to subsequent pages.

\*Please refer to [SingaporeTech.edu.sg](https://www.singaporetech.edu.sg) for the detailed list of relevant diplomas.

<sup>#</sup>Students admitted to the Radiation Therapy programme may be required to have secured a sponsorship from their employer at the point of enrolment. Refer to [SingaporeTech.edu.sg](https://www.singaporetech.edu.sg) for updates.

For up-to-date information, please refer to [SingaporeTech.edu.sg](https://www.singaporetech.edu.sg).

# Admission Requirements

## Other Degrees

Successful applicants who have a Science-related honours degree from a recognised university may be offered a place in the two year, eight-month accelerated Physiotherapy Career Conversion Programme (CCP).

### EXAMPLES OF SCIENCE-RELATED HONOURS DEGREE

---

- Exercise and Sports Sciences
  - Anatomy and Physiology
  - Nursing and Medicine
  - Life Sciences/Biomedical Sciences
  - Other Health Sciences
- 

Other degrees will be considered on a case-by-case basis.

Applicants will also need to fulfil language requirements. Please refer to subsequent pages.

For up-to-date information, please refer to [SingaporeTech.edu.sg](https://www.singaporetech.edu.sg).

# Language Requirements

## Dietetics and Nutrition, Occupational Therapy, and Physiotherapy

QUALIFICATION	SUBJECT	Minimum English Requirement
<p>Applicants to these Health Sciences programmes are also required to fulfil <b>one of the following English requirements by the application closing date</b>. The Allied Health Professions Council (AHPC) mandates the minimum English language proficiency (ELP) requirements for the Allied Health programmes to enable our graduates to practise in the respective Allied Health professions.</p>		
GCE 'O' Level	English as First Language	C5
GCE 'A' Level	General Paper/ Knowledge & Inquiry	D
International Baccalaureate (IB)	SL/HL English A: Language & Literature or	4
	SL/HL English A: Literature or	
	SL: Literature & Performance	
Polytechnic Foundation Programme (PFP)	English modules	C+
NUS High School Diploma	EL4101 or higher (EL5101, 6103) modules	C+
IELTS (Academic)	IELTS	7.0 (for all components)
TOEFL	TOEFL	250 marks for computer-based test, or 600 marks for paper-based test, or 100 marks for internet-based test
OET	OET	B

Applicants to all Health Sciences Programmes (Diagnostic Radiography, Dietetics and Nutrition, Nursing, Occupational Therapy, Physiotherapy, Radiation Therapy, and Speech and Language Therapy), are required to undergo a pre-enrolment medical examination prior to the commencement of their studies at SIT and should be certified physically and mentally fit for the programme by the examining medical doctor. Please refer to the Mandatory Medical Clearance here – [SingaporeTech.edu.sg/admissions/undergraduate/requirements](https://www.singaporetech.edu.sg/admissions/undergraduate/requirements).

Applicants who hold a first degree from Singapore, Australia, Canada (except Quebec), New Zealand, Republic of Ireland, South Africa, United Kingdom, or the United States of America will be deemed to have fulfilled the stipulated English Language requirement for the programme.

# Language Requirements

## Diagnostic Radiography and Radiation Therapy

QUALIFICATION	SUBJECT	Minimum English Requirement
<p>Applicants to these Health Sciences programmes are also required to fulfil <b>one of the following English requirements by the application closing date</b>. The Allied Health Professions Council (AHPC) mandates the minimum English language proficiency (ELP) requirements for the Allied Health programmes to enable our graduates to practise in the respective Allied Health professions.</p>		
GCE 'O' Level	English as First Language	C6
GCE 'A' Level	General Paper/ Knowledge & Inquiry	D
International Baccalaureate (IB)	SL/HL English A: Language & Literature or	4
	SL/HL English A: Literature or  SL: Literature & Performance	
Polytechnic Foundation Programme (PFP)	English modules	C+
NUS High School Diploma	EL4101 or higher (EL5101, 6103) modules	C+
IELTS (Academic)	IELTS	6.0 (for all components)
TOEFL	TOEFL	60 marks for internet-based test
OET	OET	B

Applicants to all Health Sciences Programmes (Diagnostic Radiography, Dietetics and Nutrition, Nursing, Occupational Therapy, Physiotherapy, Radiation Therapy and Speech and Language Therapy), are required to undergo a pre-enrolment medical examination prior to the commencement of their studies at SIT and should be certified physically and mentally fit for the programme by the examining medical doctor. Please refer to the Mandatory Medical Clearance here – [SingaporeTech.edu.sg/admissions/undergraduate/requirements](https://www.singaporetech.edu.sg/admissions/undergraduate/requirements).

Applicants who hold a first degree from Singapore, Australia, Canada (except Quebec), New Zealand, Republic of Ireland, South Africa, United Kingdom, or the United States of America will be deemed to have fulfilled the stipulated English Language requirement for the programme.

# Language Requirements

## Speech and Language Therapy

QUALIFICATION	SUBJECT	Minimum English Requirement	Minimum Mother Tongue Language (MTL) Grade Required*
		Applicants to these Health Sciences programmes are also required to fulfil <b>one of the following English requirements by the application closing date</b> . The Allied Health Professions Council (AHPC) mandates the minimum English language proficiency (ELP) requirements for the Allied Health programmes to enable our graduates to practise in the respective Allied Health professions.	
GCE 'O' Level	English as First Language	A2	Higher Mother Tongue (HMTL) – C6/ Mother Tongue Language (MTL) – C5
GCE 'A' Level	General Paper/ Knowledge & Inquiry	B	H1 Mother Tongue Language (MTL) – E
International Baccalaureate (IB)	SL/HL English A: Language & Literature or SL/HL English A: Literature or SL: Literature & Performance	5	HL/SL Mother Tongue Language (MTL) A: Literature or Language and Literature – 4
Polytechnic Foundation Programme (PFP)	English modules	A	–
NUS High School Diploma	EL4101 or higher (EL5101, 6103) modules	B	–
IELTS (Academic)	IELTS	8.0, and no less than 7.5, for all components	–
TOEFL	TOEFL	110 marks for internet-based test	–
OET	OET	3 Grade As and 1 Grade B	–

Applicants to all Health Sciences Programmes (Diagnostic Radiography, Dietetics and Nutrition, Nursing, Occupational Therapy, Physiotherapy, Radiation Therapy, and Speech and Language Therapy), are required to undergo a pre-enrolment medical examination prior to the commencement of their studies at SIT and should be certified physically and mentally fit for the programme by the examining medical doctor. Please refer to the Mandatory Medical Clearance here – [SingaporeTech.edu.sg/admissions/undergraduate/requirements](https://www.singaporetech.edu.sg/admissions/undergraduate/requirements).

Applicants who hold a first degree from Singapore, Australia, Canada (except Quebec), New Zealand, Republic of Ireland, South Africa, United Kingdom, or the United States of America will be deemed to have fulfilled the stipulated English Language requirement for the programme.

\*Applicants to the Speech and Language Therapy programme are required to fulfil both the English and Mother Tongue Language (MTL) requirements as stated in the table above.



# YOU CAN SEE YOUR FUTURE FROM HERE



**G**et a chance to study at SIT's new campus situated in the heart of Punggol Digital District.

- Campus-in-a-Park
- Smart and Sustainable University
- Companies can tap SIT's applied learning and research capabilities
- Closer Industry Partnership with Collaboration Loop linking SIT and JTC buildings
- Opportunities to work on real-world business problems

Click [here](#) to find out more.

**TAKE YOUR**

**NEXT STEP HERE**

When you become a SITizen, you join a growing pool of successful alumni.

If you are ready to begin the application process and want to learn more, visit [SingaporeTech.edu.sg/Admissions](https://SingaporeTech.edu.sg/Admissions).

**SO, WHO'S READY**

**FOR AN ADVENTURE?**

# CONTACT US

## SINGAPORE INSTITUTE OF TECHNOLOGY

SIT@Dover, 10 Dover Drive,  
Singapore 138683

+65 6592 1189 (Main Line)

## STUDENT ADMISSIONS

+65 6592 1136

Adm@SingaporeTech.edu.sg  
(Undergraduate Programmes)

Adm.Postgrad@SingaporeTech.edu.sg  
(Postgraduate Programmes)

## FINANCIAL ASSISTANCE AND SCHOLARSHIP MATTERS

+65 6592 1136

FAS@SingaporeTech.edu.sg

## CENTRE FOR CAREER READINESS

+65 6592 8150

CareerReadiness@SingaporeTech.edu.sg

## DEGREE PROGRAMMES

+65 6592 2021

AcdPrg@SingaporeTech.edu.sg

## FINANCE, BILLINGS, AND GIRO

+65 6592 8149

StudentFinance@SingaporeTech.edu.sg

## REGISTRAR'S OFFICE

+65 6592 2091

Registrar@SingaporeTech.edu.sg

## STUDENT EVENTS, ACTIVITIES, AND CLUBS

+65 6592 1191

SLD@SingaporeTech.edu.sg

## APPLIED RESEARCH, INNOVATION & ENTERPRISE

+65 6592 2723

Innovate@SingaporeTech.edu.sg

## GIVING TO SIT

+65 6592 1138

+65 6592 1094

Advancement@SingaporeTech.edu.sg

## LOCATE US

### SIT@DOVER

10 Dover Drive, Singapore 138683

### SIT@NP BUILDING

Ngee Ann Polytechnic  
537 Clementi Road, Singapore 599493

### SIT@NYP BUILDING

Nanyang Polytechnic  
172A Ang Mo Kio Avenue 8, Singapore 567739  
(beside Blk Q of NYP campus)

### SIT@RP BUILDING

Republic Polytechnic  
43 Woodlands Avenue 9, Singapore 737729

### SIT@SP BUILDING

Singapore Polytechnic  
510 Dover Road, Singapore 139660

### SIT@TP BUILDING

Temasek Polytechnic  
Blk 29B Tampines Avenue 1, Singapore 528694

© December 2021.

All information is accurate at time of print.  
SIT reserves the right to amend the information  
without prior notice. For the most up-to-date  
information, please visit [SingaporeTech.edu.sg](https://www.singaporetech.edu.sg).



SINGAPORETECH.EDU.SG

Singapore Institute of Technology

SIT@Dover, 10 Dover Drive,  
Singapore 138683