



**SINGAPORE
INSTITUTE OF
TECHNOLOGY**

CAMPUS COURT

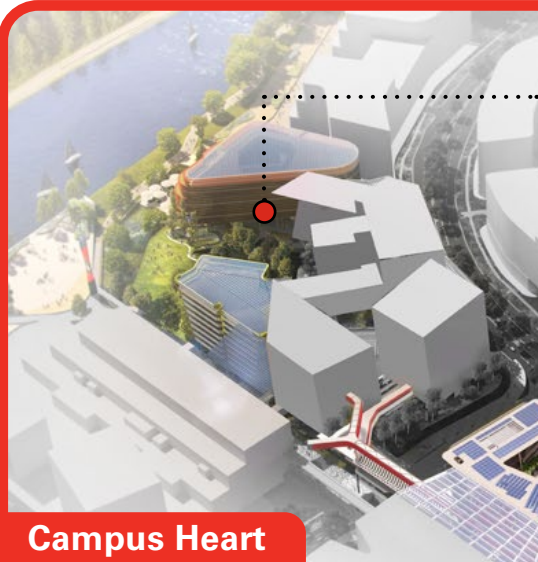


A Glimpse of Our New Home

SIT Punggol Campus

Nestled in the heart of the Punggol Digital District (PDD), Singapore's up-and-coming premier smart district master-planned and developed by JTC, the Singapore Institute of Technology (SIT) stands as a hub for our SITizens, industry and community. This award-winning campus is where innovation thrives. Let's discover SIT's brand-new Punggol Campus together!

Campus Court



Facing Coney Island and designed with a courtyard at its core, the campus is integrated with green technologies to create conducive spaces for learning. Here, you'll find the Kwek Leng Beng University Tower, Ho Bee Auditorium and indoor sports hall.

Campus Heart

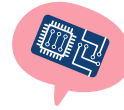
The "Campus-in-the-Park" capitalises on an existing secondary forest by seamlessly blending learning spaces with lush tropical landscapes. Here, you'll find the library, academic blocks, a sheltered event plaza, and the Hatchery, a 10-storey building that facilitates and drives the exchange of ideas between academia and industry.



9 hectares in total land area — equal to 17 football fields!



Smarter Than You Think



Powered by IoT, the smart campus will have an **Integrated Building Management System (IBMS)** that oversees campus-wide systems such as lighting and security to enable holistic facilities management and energy optimisation. A network of over **20,000 sensors** collects real-time data on temperature, light and footfall to feed into the IBMS.



Sustainably Powered

- ▶ Two **Super Low Energy (SLE) buildings**, touted to be among the best-in-class energy-efficient buildings in Singapore, are slated to achieve **at least 40% energy savings** based on prevailing code.
- ▶ SIT has partnered with SP Group to build Southeast Asia's **first Multi-Energy Microgrid (MEMG)** with approximately 10,000m² of photovoltaic (PV) solar panels, providing enough electricity to **power 1,000 four-room flats per year!**
- ▶ SIT and ENGIE will build the **District Cooling System (DCS)** to provide chilled water for air-conditioning that can **reduce carbon footprint** and **improve energy efficiency by about 30% more** than traditional cooling methods.



Awarded the **BCA Green Mark Platinum Award**



Awarded the **BCA Universal Design Mark GoldPLUS (Design) Award**

- ▶ SIT has implemented a water management framework and infrastructure to **harvest rainwater** from the land. The amount of non-drinking water saved annually can **fill 34 Olympic-size swimming pools!**



Awarded the **Active Beautiful Clean (ABC) Waters Certified (Gold) Award**

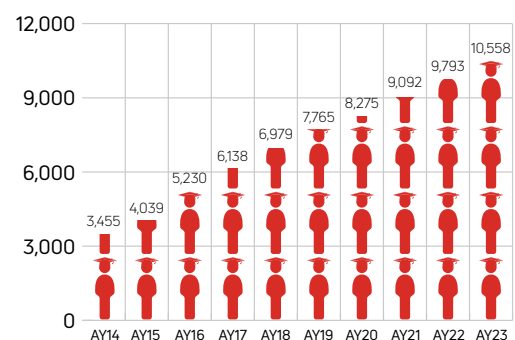
- ▶ No single-use disposables in this house—remember to **bring your own (BYO)** containers for takeaways!



Growing SIT Community



Our Punggol Campus marks the coming together of six different locations into a new space we can call home. With our united and diverse community of students and staff, we are excited to build a vibrant campus life, foster connections and create memories that will last a lifetime.



Student Enrolment

Data attained from official student numbers of the relevant AY.

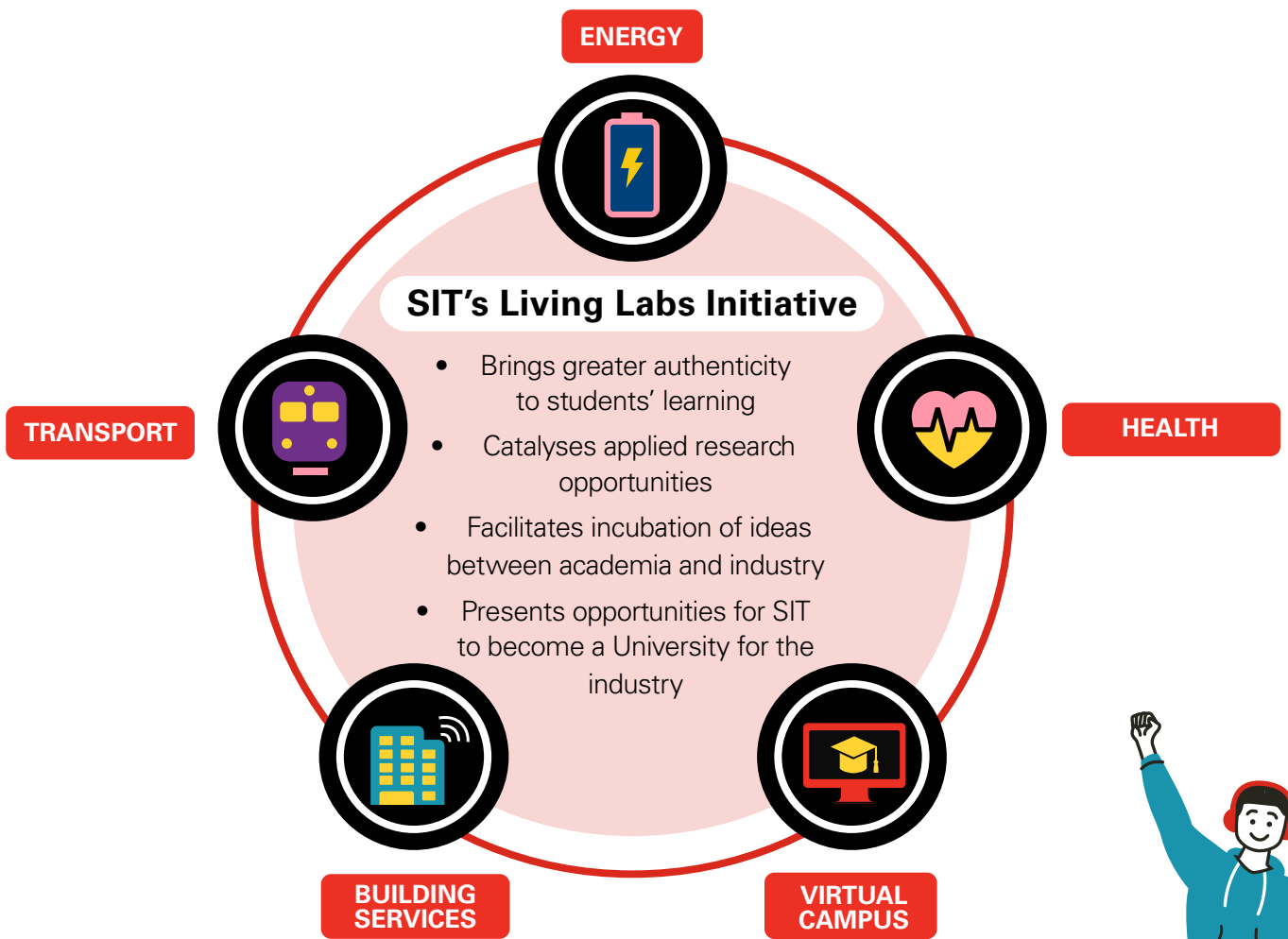


A Learning Hub for Future Readiness

SIT's co-location in the PDD will enhance our applied learning and applied research endeavours. Students will engage in authentic learning experiences and problem-solving opportunities through the real-world systems of our on-campus Living Labs and those of our partners. Our collaborations with industry and community to co-develop solutions via translational research, build impactful solutions and nurture talent will also add to the district's buzz.

SIT has also embarked on off-campus Living Lab initiatives (Healthcare and Transport) with our key partners. Through our Living Labs, SIT will leverage our infrastructure and capabilities to bring value to our students, industry and the community.

Our **Living Labs Initiative** is aligned with SIT's education and strategic translational research programmes, and provides applied research opportunities that empower students and industry partners.



Getting Here

Bus and MRT: The Punggol North Bus Interchange and Punggol Coast MRT Station (NE18) on the North East Line are expected to be operational by the end of 2024.



SCAN HERE FOR MORE INFORMATION!